



Santosha

If you dream of tranquility and luxury accommodation, then put Santosha on your wish list.

Enjoying a true sense of privacy you can find this Balinese guest cabin down a quiet path in the estate grounds. Taking advantage of the idyllic setting Santosha boasts floor-to-ceiling windows, allowing guests to wander at the spectacular views of the forest. The light pouring in adds to the elegance and warmth of this unique room.

There's a wonderfully spacious feel to the vaulted ceiling, whilst warm timber beams afford a year-round sense of cosiness.

Outside, lush bamboo plants frame a stunning alfresco bathroom with a wood-framed tub and a grey stone vanity unit, a spectacular spot for an outdoor soak. If you're looking for the perfect place to switch off and get away from it all, this is it. Magical.

The Santosha suite allows friends or solo travellers a unique opportunity to share in an utterly luxurious manner.

- 2 twin beds or double room configuration
- Triple room configuration on request
- Living area
- Al Fresco bathroom
- Airconditioning









Bhakti



Wander down from the main house to find Bhakti, a stylish hideaway with a sand-toned stone façade that mirrors its soft interior hues, blending in perfectly with its surroundings.

Bhakti is a self-contained casita offering a seamless blend of natural Ibicencan materials and modern architecture. The local stone and Boho influences throughout the suite give the feeling of being in a beautiful rustic dream, which is truly quite special.

Bhakti is perfect for friends or solo travellers looking for a unique and tranquil space within the estate grounds.

- 2 twin beds or double room configuration
- In room ensuite facilities
- Airconditioning



Ananda







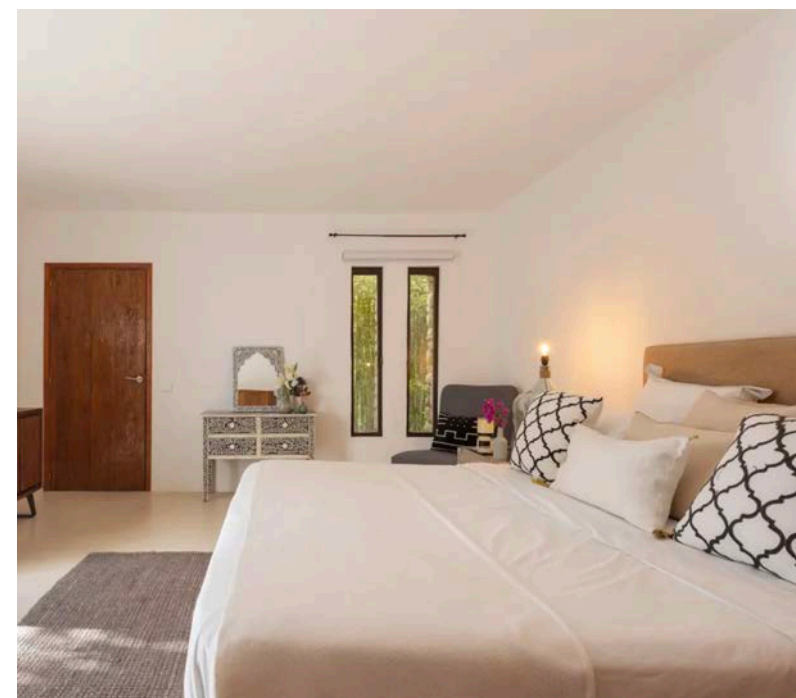
The Ananda triple occupancy master suite is the perfect hideaway designed for luxury comfort.

Covering the first floor of the main finca this elegant suite offers built in wardrobes and a modern & stylish shower room with separate toilet for privacy.

Sliding doors open out onto its own tranquil terrace, a secluded sun-trap fringed with bougainvillea and a sumptuous day bed perfect for lounging.

- Triple occupancy, perfect for three social souls sharing
- Private terrace with distant sea views
- Airconditioning
- Ensuite shower

Shiva & Shakti



As you enter the light-filled Shiva and Shakti suites, your eyes will immediately be drawn to the floor to ceiling windows. Two delightful rooms, with individually designed pared-back palettes and immaculate glazing which guide beams of light inside.

As your focus settles on the room and décor you will not be disappointed. Both suites have stunningly designed in-room bathrooms with freestanding natural stone baths and windows allowing you to shower whilst admiring nature.

The rooms each have their own private terrace, offering the perfect place for some quiet time or a luxurious pamper session.

Shiva & Shakti each offer :

- Twin beds or double bedroom configuration
- Triple room configuration for Shiva on request
- Private terrace
- Airconditioning
- Ensuite bathrooms

